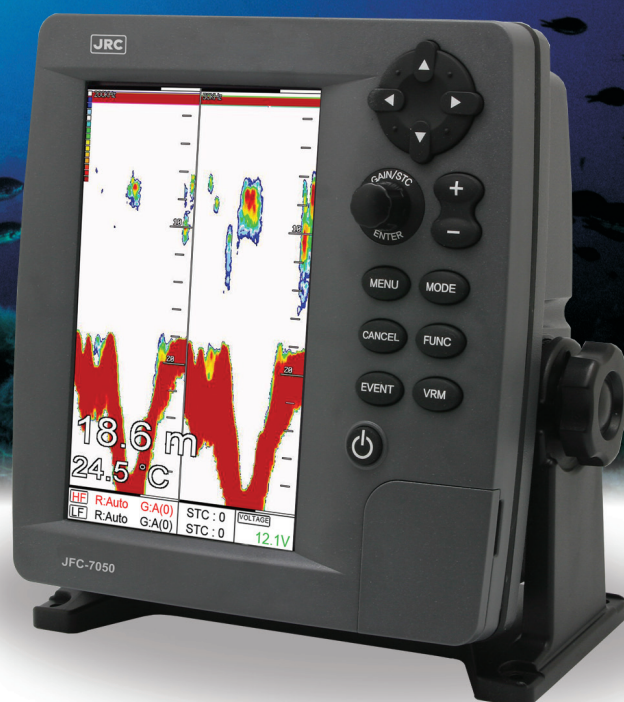


# JFC-7050 (FF70) Echo sounder/Fish finder



– the high performance echo sounder/fish finder JFC-7050 guarantees accuracy and reliability

**7-inch high brightness display**

**Simple operation**

**Dual frequency 50/200kHz**

**Fast processing**

**Multi display modes and alarms available**

# Features

## Features

The JFC-7050 echo sounder/fish finder incorporates a high brightness 7-inch display and simple operation, allowing for flexibility and highly accurate and reliable read-out functionality.



## Dual frequency

The JFC-7050 displays echoes on both 50 and 200kHz frequency. Generally the lower frequency is more suitable for bottom discrimination, while the high frequency is more useful for shallow water detection. This enables you to see the differences on both frequencies more clearly, giving you better potential for a more profitable catch.

## Display

JRC's new echo sounder/fish finder incorporates a 7-inch high definition color LCD display. The preferred display mode can be easily selected and operation is made simple through the use of popup menus similar to those found on personal computers.

## Bottom zoom/lock

The bottom zoom and lock display mode provides a split display with a magnified image of the sea bottom, while maintaining a normal sea bottom view as reference.

## Alarms

The JFC-7050 incorporates a variety of alarms for fish finding, water and navigation data alarms, contributing to safer navigation and more efficient fish finding.

## Saving data

Saving user data, such as waypoints, marks and tracks is easy, and can be done in two ways. Either record directly from the current screen or make individual screen captures. The data is stored on an external SD card (non JRC supply).

## A-scope

By selecting the A-scope presentation mode, you will receive a detailed and real time representation of fish and bottom features passing through the beam of the transducer.

## Automatic functions

Automatic gain, STC and range settings permit the bottom echo to be displayed on the screen at all times, ensuring easy operation - even for the novice user.

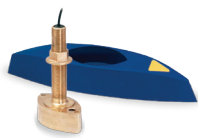
# Flexibility

## Flexible interfacing

The transducer is the heart of the operation, measuring depth and temperature information, by sending ultrasonic signals which determine seabed conditions and the presence of life underwater. With separate NMEA0183 input and output on the display, it enables you to view speed and position, simply by connecting a GPS (supporting SBAS, DGPS, GLONASS).

## Transducer overview

Various transducer are available from Airmar, suiting your type of vessel or installation approach. Detailed information available at [airmartechology.com](http://airmartechology.com)



**B45**  
Transducer  
Bronze  
Thru hull  
2.5kg  
600W rms



**P58**  
Triducer  
Plastic  
Transom mount  
0.5kg  
600W rms



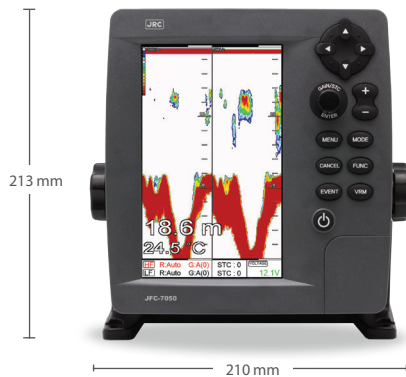
**P319**  
Transducer  
Plastic  
Thru hull  
0.6kg  
600W rms



**B60**  
Transducer  
Bronze  
Thru hull  
1.4kg  
600W rms

## Weight and dimensions

JFC-7050 Weight 1,8 kg



### In the box

- Display
- Bracket
- Sun cover
- Power/data cable (1.5m)
- Manual

### Transducers option

Model	JRC part number	Airmar code
Airmar B45	5AWBF00001	31-272-14-01
Airmar P58	5AWBF00002	31-498-3-01
Airmar P319	5AWBF00003	31-323-14-01
Airmar B60	5AWBF00004	31-556-8-02

Cable length 10m

# Specifications

	JFC-7050
Display	7-inch color LCD (800 by 480 pixels), LED backlight
Brightness	500cd/m2 (ratio 16:9)
Power	12-36V DC
Consumption	18W
Frequency	50/200kHz
Display modes	Normal, Bottom lock, Bottom zoom, A-scope
Output power	600W RMS
Depth range	2.5-1200m
Shift range	0-1200m
Auto mode	Auto range, Auto gain, Auto STC
Bottom zoom range	2.5/5/10/20m
Manual gain	50 levels
Rejection	4 levels
STC	20 levels
Pulse width	3 levels (low, middle, high)
Transmitting power	4 levels
Background color	5 colors
Display color	16 colors
Color rejection	14 levels
Interface rejection	3 levels
Alarm	Depth, water temperature, fish school (depth, range)
Data in/out	NMEA0183, version 1.5-2.0
Data display	Standard: depth, temp, speed (SOG) NMEA: time/date, LAT/LON, bearing (COG), NAV information
Backup	SD card <sup>1</sup> and mini-USB
Waypoint/mark	20.000 waypoints, 20.000 marks
Simulator	Built-in
Unit	Depth: m, ft, fm / Temperature: °C, °F / Speed: nm/kt, km/h, mph
Ambient conditions	Operating temperature: -15° to 50°C Storage temperature: -20° to 50°C IP protection rating: IP55 Relative humidity: 0% to 90% non-condensing

1. Non JRC supply

## JRC offices around the world

## Authorized reseller

Amsterdam	Hanoi	Manilla	Seattle	Taipei
Athens	Hong Kong	New York	Shanghai	Tokyo
Hamburg	Jakarta	Rio de Janeiro	Singapore	

[jrceurope.com](http://jrceurope.com)